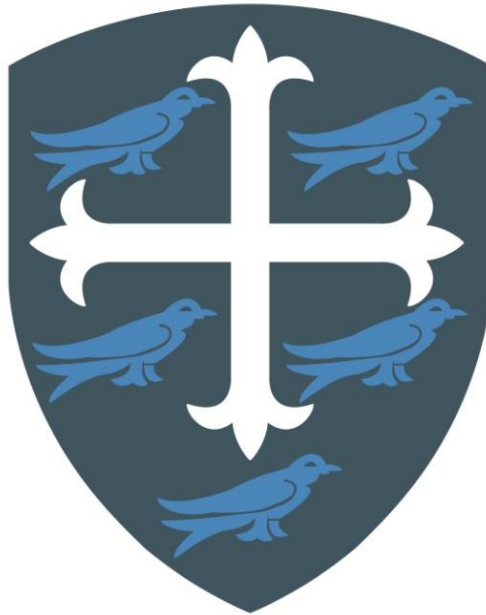


# St Mary's Catholic Primary School



## Child Protection and Safeguarding Policy 2020-2021

<b>Legal Status:</b>	Statutory
<b>Last Review:</b>	September 2019
<b>Review date:</b>	September 2020
<b>Next Review:</b>	September 2021
<b>Responsible Person:</b>	Governing Body

### **Mission Statement**

"The family of St Mary's strives to grow in God's love and care by learning together and valuing the uniqueness of each person."

## **1. Aims**

St Mary's Catholic Primary School aims to ensure that:

- Appropriate action is taken in a timely manner to safeguard and promote children's welfare
- All staff are aware of their statutory responsibilities with respect to safeguarding
- Staff are properly trained in recognising and reporting safeguarding issues
- We practice safe recruitment in checking the suitability of staff and volunteers to work with children
- We establish a safe environment in which children can learn and develop

## **2. Legislation and statutory guidance**

This policy is based on the Department for Education's statutory guidance, Keeping Children Safe in Education and Working Together to Safeguard Children, and the Governance Handbook. We comply with this guidance and the procedures set out by our local safeguarding children board.

This policy is also based on the following legislation:

- Section 175 of the Education Act 2002, which places a duty on schools and local authorities to safeguard and promote the welfare of pupils
- The School Staffing (England) Regulations 2009, which set out what must be recorded on the single central record and the requirement for at least one person on a school interview/appointment panel to be trained in safer recruitment techniques
- The Children Act 1989 (and 2004 amendment), which provides a framework for the care and protection of children
- Section 5B(11) of the Female Genital Mutilation Act 2003, as inserted by section 74 of the Serious Crime Act 2015, which places a statutory duty on teachers to report to the police where they discover that female genital mutilation (FGM) appears to have been carried out on a girl under 18
- DfE guidance, 'Keeping Children Safe in Education' (September 2020)
- DfE guidance, 'Working Together to Safeguard Children' (July 2018)
- Statutory guidance on FGM, which sets out responsibilities with regards to safeguarding and supporting girls affected by FGM
- The Rehabilitation of Offenders Act 1974, which outlines when people with criminal convictions can work with children
- Schedule 4 of the Safeguarding Vulnerable Groups Act 2006, which defines what 'regulated activity' is in relation to children
- Statutory guidance on the Prevent duty, which explains schools' duties under the Counter-Terrorism and Security Act 2015 with respect to protecting people from the risk of radicalisation and extremism
- The Childcare (Disqualification) Regulations 2009 (and 2018 amendment) and Childcare Act 2006, which set out who is disqualified from working with children
- The Equalities Act (2010)

This policy also meets requirements relating to safeguarding and welfare in the statutory framework for the Early Years Foundation Stage.

## **3. Definitions**

Safeguarding and promoting the welfare of children means:

- Protecting children from maltreatment
- Preventing impairment of children's health or development
- Ensuring that children grow up in circumstances consistent with the provision of safe and effective care
- Taking action to enable all children to have the best outcomes

**Child protection** is part of this definition and refers to activities undertaken to prevent children suffering, or being likely to suffer, significant harm.

**Abuse** is a form of maltreatment of a child, and may involve inflicting harm or failing to act to prevent harm. Appendix 1 explains the different types of abuse.

**Neglect** is a form of abuse and is the persistent failure to meet a child's basic physical and/or psychological needs, likely to result in the serious impairment of the child's health or development. Appendix 1 defines neglect in more detail.

**Children** includes everyone under the age of 18.

#### **4. Equality statement**

Some children have an increased risk of abuse, and additional barriers can exist for some children with respect to recognising or disclosing it. We are committed to anti-discriminatory practice and recognise children's diverse circumstances. We ensure that all children have the same protection, regardless of any barriers they may face.

We give special consideration to children who:

- Have special educational needs or disabilities
- Are young carers
- May experience discrimination due to their race, ethnicity, religion, gender identification or sexuality
- Have English as an additional language
- Are known to be living in difficult situations – for example, temporary accommodation or where there are issues such as substance abuse or domestic violence
- Are at risk of FGM, sexual exploitation, forced marriage, or radicalisation
- Are asylum seekers

#### **5. Roles and responsibilities**

Safeguarding and child protection is everyone's responsibility. This policy applies to all staff, volunteers and governors in the school and is consistent with the procedures of London Safeguarding Children's Board. Our policy and procedures also apply to extended school and off-site activities.

##### **5.1 All staff**

All staff will read and understand part 1 and Annex A of the Department for Education's statutory safeguarding guidance, Keeping Children Safe in Education, and review this guidance at least annually.

All staff will be aware of:

- Our systems which support safeguarding, including the staff Safeguarding Code of Conduct, the role of the designated safeguarding lead (DSL), the behaviour policy, and the safeguarding response to children who go missing from education
- The early help process (sometimes known as the common assessment framework) and their role in it, including identifying emerging problems, liaising with the DSL, and sharing information with other professionals to support early identification and assessment
- The process for making referrals to local authority children's social care and for statutory assessments that may follow a referral, including the role they might be expected to play
- What to do if they identify a safeguarding issue or a child tells them they are being abused or neglected, including specific issues such as FGM, and how to maintain an appropriate level of confidentiality while liaising with relevant professionals

- The signs of different types of abuse and neglect, as well as specific safeguarding issues, such as child sexual exploitation (CSE), FGM and radicalisation

Section 12 and appendix 4 of this policy outline in more detail how staff are supported to do this.

## **5.2 The designated safeguarding lead (DSL)**

Our DSL is Robina Maher. The DSL takes lead responsibility for child protection and wider safeguarding.

During term time, the DSL will be available during school hours for staff to discuss any safeguarding concerns.

When the DSL is absent, the Assistant Headteachers, Carol Maguire, Lucy Black or Rosie Friel will act as cover.

The DSL will be given the time, funding, training, resources and support to:

- Provide advice and support to other staff on child welfare and child protection matters
- Take part in strategy discussions and inter-agency meetings and/or support other staff to do so
- Contribute to the assessment of children
- Refer suspected cases, as appropriate, to the relevant body (local authority children's social care, Channel programme, Disclosure and Barring Service, and/or police), and support staff who make such referrals directly

The DSL will also keep the SLT informed of any issues, and liaise with local authority case managers and designated officers for child protection concerns as appropriate.

The full responsibilities of the DSL are set out in their job description.

## **5.3 The governing board**

The governing board will approve this policy at each review, and hold the headteacher to account for its implementation.

The governing board will appoint a link governor to monitor the effectiveness of this policy in conjunction with the full governing board. This is always a different person from the DSL.

The chair of governors will act as the 'case manager' in the event that an allegation of abuse is made against the headteacher, where appropriate (see appendix 3).

## **5.4 The headteacher**

The headteacher is responsible for the implementation of this policy, including:

- Ensuring that staff (including temporary staff) and volunteers are informed of this policy as part of their induction
- Communicating this policy to parents when their child joins the school and via the school website
- Ensuring that the DSL has appropriate time, funding, training and resources, and that there is always adequate cover if the DSL is absent
- Ensuring that all staff undertake appropriate safeguarding and child protection training and update this regularly
- Acting as the 'case manager' in the event of an allegation of abuse made against another member of staff or volunteer, where appropriate (see appendix 3)
- Ensuring the relevant staffing ratios are met, where applicable

## **6. Confidentiality**

At St Mary's, all matters relating to child protection are to be treated as confidential and only shared as per the 'working together' guidance. We understand that:

- Timely information sharing is essential to effective safeguarding
- Information must only be shared on a 'need-to-know' basis, but consent is not needed to share information if a child is suffering, or at risk of, serious harm
- Staff should never promise a child that they will not tell anyone about an allegation, as this may not be in the child's best interests

## **7. Recognising abuse and taking action**

Staff, volunteers and governors must follow the procedures set out below in the event of a safeguarding issue.

### **7.1 If a child is in immediate danger**

Make a referral to children's social care and/or the police immediately if a child is in immediate danger or at risk of harm. Anyone can make a referral.

Tell the DSL (see section 5.2) as soon as possible if you make a referral directly.

Referrals can be made by contacting the Front Door Team (H&F Children's Services) on 02087536600.

You can also report through:

<https://www.gov.uk/report-child-abuse-to-local-council>

### **7.2 If a child makes a disclosure to you**

If a child discloses a safeguarding issue to you, you should:

- Listen to and believe them. Allow them time to talk freely and do not ask leading questions
- Stay calm and do not show that you are shocked or upset
- Tell the child they have done the right thing in telling you. Do not tell them they should have told you sooner
- Explain what will happen next and that you will have to pass this information on. Do not promise to keep it a secret
- Alternatively, if appropriate, make a referral to children's social care and/or the police directly (see 7.1), and tell the DSL as soon as possible that you have done so

### **7.3 If you discover that FGM has taken place or a pupil is at risk of FGM**

The Department for Education's Keeping Children Safe in Education explains that FGM comprises "all procedures involving partial or total removal of the external female genitalia, or other injury to the female genital organs".

FGM is illegal in the UK and a form of child abuse with long-lasting, harmful consequences.

It is also known as 'female genital cutting', 'circumcision' or 'initiation'.

Possible indicators that a pupil has already been subjected to FGM, and factors that suggest a pupil may be at risk, are set out in appendix 4.

Any teacher who discovers that an act of FGM appears to have been carried out on a pupil under 18 must immediately report this to the police, personally. This is a statutory duty, and teachers will face disciplinary sanctions for failing to meet it.

The duty above does not apply in cases where a pupil is at risk of FGM or FGM is suspected but is not known to have been carried out. Staff should not examine pupils.

Any other member of staff who discovers that an act of FGM appears to have been carried out on a pupil under 18 must speak to the DSL and follow our local safeguarding procedures.

**Any member of staff** who suspects a pupil is at risk of FGM, must speak to the DSL and follow our safeguarding procedures.

Staff must write up their suspicions, including any conversations that may have taken place, as soon as possible in the child's own words. Stick to the facts, and do not put your own judgement on it. Sign and date the write-up and pass it on to the DSL.

### **7.4 If you have concerns about a child (as opposed to a child being in immediate danger)**

Figure 1 below illustrates the procedure to follow if you have concerns about a child's welfare and the child is not in immediate danger.

Where possible, speak to the DSL first to agree a course of action. Alternatively, make a referral to local authority children's social care directly (see 'Referral' below).

You can also contact the charity NSPCC on 0808 800 5000 if you need advice on the appropriate action.

## **Family Support**

If early help is appropriate, the DSL will liaise with other agencies and set up an inter-agency assessment as appropriate.

The DSL will keep the case under constant review and the school will consider a referral to local authority children's social care if the situation does not seem to be improving.

Timelines of interventions will be monitored and reviewed.

## **Referral**

If it is appropriate to refer the case to local authority children's social care or the police, the DSL will make the referral.

If you make a referral directly (see section 7.1), you must tell the DSL as soon as possible.

The local authority will make a decision within 1 working day of a referral about what course of action to take and will let the person who made the referral know the outcome. The DSL or person who made the referral must follow up with the local authority if this information is not made available, and ensure outcomes are properly recorded.

If the child's situation does not seem to be improving after the referral, the DSL or person who made the referral must contact the local authority and make sure the case is reconsidered to ensure the concerns have been addressed and the child's situation improves.

## **7.5 If you have concerns about extremism**

If a child is not at immediate risk of harm, where possible, speak to the DSL first to agree a course of action. Alternatively, make a referral to local authority children's social care directly if appropriate (see 'Referral' above).

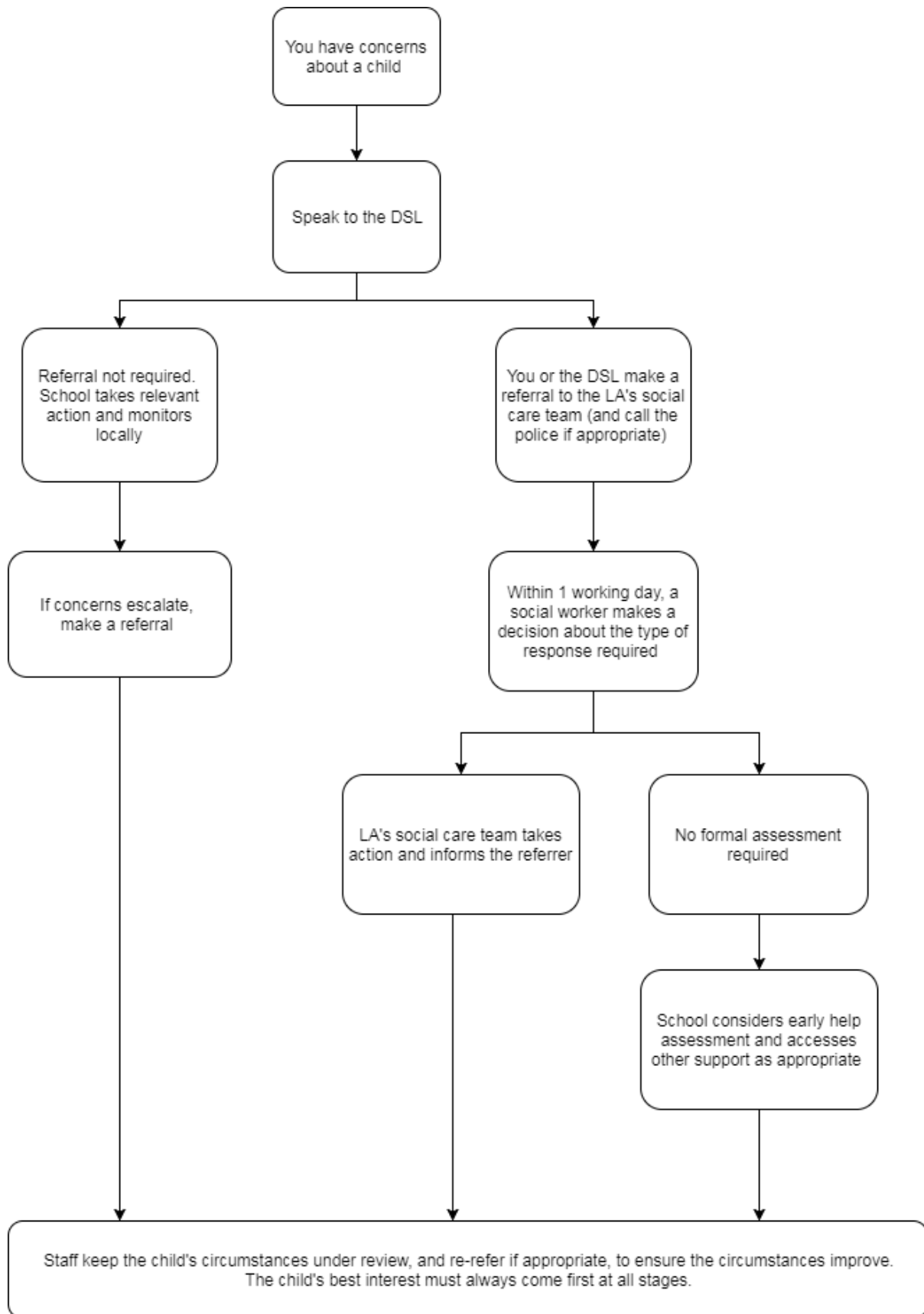
Where there is a concern, the DSL will consider the level of risk and decide which agency to make a referral to. This could include Channel, the government's programme for identifying and supporting individuals at risk of being drawn into terrorism, or the local authority children's social care team.

The Department for Education also has a dedicated telephone helpline, 020 7340 7264 that school staff and governors can call to raise concerns about extremism with respect to a pupil. You can also email [counter.extremism@education.gov.uk](mailto:counter.extremism@education.gov.uk). Note that this is not for use in emergency situations.

In an emergency, call 999 or the confidential anti-terrorist hotline on 0800 789 321 if you:

- Think someone is in immediate danger
- Think someone may be planning to travel to join an extremist group
- See or hear something that may be terrorist-related

**Figure 1: procedure if you have concerns about a child's welfare (no immediate danger)**



## **7.6 Concerns about a staff member or volunteer**

If you have concerns about a member of staff or volunteer, speak to the headteacher. If you have concerns about the headteacher, speak to the chair of governors.

You can also discuss any concerns about any staff member or volunteer with the DSL.

The headteacher/chair of governors/DSL will then follow the procedures set out in appendix 3, if appropriate.

## **7.7 Allegations of abuse made against other pupils**

We recognise that children are capable of abusing their peers. Abuse will never be tolerated or passed off as "banter" or "part of growing up".

Most cases of pupils hurting other pupils will be dealt with under our school's behaviour policy, but this child protection and safeguarding policy will apply to any allegations that raise safeguarding concerns. This might include where the alleged behaviour:

- Is serious, and potentially a criminal offence
- Could put pupils in the school at risk
- Is violent
- Involves pupils being forced to use drugs or alcohol
- Involves sexual exploitation or sexual abuse, such as indecent exposure, sexual assault, or sexually inappropriate pictures or videos (including sexting)

If a pupil makes an allegation of abuse against another pupil:

- You must tell the DSL and record the allegation, but do not investigate it
- The DSL will contact the local authority children's social care team and follow its advice, as well as the police if the allegation involves a potential criminal offence
- The DSL will put a risk assessment and support plan into place for all children involved – both the victim(s) and the child(ren) against whom the allegation has been made – with a named person they can talk to if needed
- The DSL will contact the children and adolescent mental health services (CAMHS), if appropriate

We will minimise the risk of peer-on-peer abuse by:

- Challenging any form of derogatory or sexualised language or behaviour
- Being vigilant to issues that particularly affect different genders – for example, sexualised or aggressive touching or grabbing towards female pupils, and initiation or hazing type violence with respect to boys
- Ensuring our curriculum helps to educate pupils about appropriate behaviour and consent
- Ensuring pupils know they can talk to staff if they have any concerns
- Ensuring staff are trained to understand that a pupil harming a peer could be a sign that the child is being abused themselves, and that this would fall under the scope of this policy

## **8. Notifying parents**

Where appropriate, we will discuss any concerns about a child with the child's parents. The DSL will normally do this in the event of a suspicion or disclosure.

Other staff will only talk to parents about any such concerns following consultation with the DSL.

If we believe that notifying the parents would increase the risk to the child, we will discuss this with the local authority children's social care team before doing so.

In the case of allegations of abuse made against other children, we will normally notify the parents of all the children involved.



## **9. Mobile phones and cameras**

Staff are allowed to bring their personal phones to school for their own use, but will limit such use to non-contact time when pupils are not present. Staff members' personal phones will remain in their bags or cupboards during contact time with pupils.

Staff will not take pictures or recordings of pupils on their personal phones or cameras.

We will follow the General Data Protection Regulation and Data Protection Act 2018 when taking and storing photos and recordings for use in the school.

## **10. Complaints and concerns about school safeguarding practices**

### **10.1 Complaints against staff**

Complaints against staff that are likely to require a child protection investigation will be handled in accordance with our procedures for dealing with allegations of abuse made against staff (see appendix 3).

### **10.3 Whistleblowing**

It is recognised that children cannot be expected to raise concerns in an environment where staff fail to do so. The school will ensure that all staff are made aware of their duty to raise concerns about the attitude or actions of colleagues. If staff have concerns regarding the way the school safeguards pupils they may use the Whistleblowing Policy.

## **11. Record-keeping**

We will hold records in line with our records retention schedule.

All safeguarding concerns, discussions, decisions made and the reasons for those decisions, must be recorded in writing. If you are in any doubt about whether to record something, discuss it with the DSL.

Non-confidential records will be easily accessible and available. Confidential information and records will be held securely and only available to those who have a right or professional need to see them.

Safeguarding records relating to individual children will be retained for a reasonable period of time after they have left the school.

The records we keep are both electronic and paper-based.

In addition:

- Appendix 2 sets out our policy on record-keeping specifically with respect to recruitment and pre-employment checks
- Appendix 4 sets out our policy on record-keeping with respect to allegations of abuse made against staff

## **12. Training**

### **12.1 All staff**

All staff members will undertake safeguarding and child protection training at induction, including on whistle-blowing procedures, to ensure they understand the school's safeguarding systems and their responsibilities, and can identify signs of possible abuse or neglect. This training will be regularly updated and will be in line with advice from our local safeguarding children board.

All staff will have training on the government's anti-radicalisation strategy, Prevent, to enable them to identify children at risk of being drawn into terrorism and to challenge extremist ideas.

Staff will also receive regular safeguarding and child protection updates (for example, through emails, e-bulletins and staff meetings) as required, but at least annually.

Volunteers will receive appropriate training, if applicable.

## **12.2 The DSL and DHT/AHT**

The DSL and DHT/AHT will undertake child protection and safeguarding training at least every 2 years.

In addition, they will update their knowledge and skills at regular intervals and at least annually (for example, through e-bulletins, meeting other DSLs, or taking time to read and digest safeguarding developments).

They will also undertake Prevent awareness training.

## **12.3 Governors**

All governors receive training about safeguarding, to make sure they have the knowledge and information needed to perform their functions and understand their responsibilities.

## **12.4 Recruitment – interview/appointment panels**

At least one person on any interview/appointment panel for a post at the school will have undertaken safer recruitment training. This will cover, as a minimum, the contents of the Department for Education's statutory guidance, Keeping Children Safe in Education, and be in line with local safeguarding procedures.

## **12.5 Staff who have contact with pupils and families**

All staff who have contact with children and families will have supervisions which will provide them with support, coaching and training, promote the interests of children and allow for confidential discussions of sensitive issues.

## **13. Monitoring arrangements**

This policy will be reviewed annually by the Headteacher. At every review, it will be approved by the full governing board.

## **14. Links with other policies**

This policy links to the following policies and procedures:

- Administering Medicines Policy
- Allegations of Abuse Against Staff Guidelines
- Anti-Bullying Policy
- Attendance and Punctuality Policy
- Positive Behaviour Policy
- Complaints Procedure
- Data Protection Policy
- Disciplinary Policy
- E-Safety Policy
- Health and safety Policy
- Home-School Agreement
- Inclusion and Special Educational Needs Policy
- Sex and Relationship Education Policy
- Staff Code of Conduct (Staff Handbook)
- Whistleblowing Policy

These appendices are based on the Department for Education's statutory guidance, Keeping Children Safe in Education.

### **Appendix 1: types of abuse**

Abuse, including neglect, and safeguarding issues are rarely standalone events that can be covered by one definition or label. In most cases, multiple issues will overlap.

**Physical abuse** may involve hitting, shaking, throwing, poisoning, burning or scalding, drowning, suffocating or otherwise causing physical harm to a child. Physical harm may also be caused when a parent or carer fabricates the symptoms of, or deliberately induces, illness in a child.

**Emotional abuse** is the persistent emotional maltreatment of a child such as to cause severe and adverse effects on the child's emotional development. Some level of emotional abuse is involved in all types of maltreatment of a child, although it may occur alone.

Emotional abuse may involve:

- Conveying to a child that they are worthless or unloved, inadequate, or valued only insofar as they meet the needs of another person
- Not giving the child opportunities to express their views, deliberately silencing them or 'making fun' of what they say or how they communicate
- Age or developmentally inappropriate expectations being imposed on children. These may include interactions that are beyond a child's developmental capability, as well as overprotection and limitation of exploration and learning, or preventing the child participating in normal social interaction
- Seeing or hearing the ill-treatment of another
- Serious bullying (including cyberbullying), causing children frequently to feel frightened or in danger, or the exploitation or corruption of children

**Sexual abuse** involves forcing or enticing a child or young person to take part in sexual activities, not necessarily involving a high level of violence, whether or not the child is aware of what is happening. The activities may involve:

- Physical contact, including assault by penetration (for example rape or oral sex) or non-penetrative acts such as masturbation, kissing, rubbing and touching outside of clothing
- Non-contact activities, such as involving children in looking at, or in the production of, sexual images, watching sexual activities, encouraging children to behave in sexually inappropriate ways, or grooming a child in preparation for abuse (including via the internet)

Sexual abuse is not solely perpetrated by adult males. Women can also commit acts of sexual abuse, as can other children.

**Neglect** is the persistent failure to meet a child's basic physical and/or psychological needs, likely to result in the serious impairment of the child's health or development. Neglect may occur during pregnancy as a result of maternal substance abuse.

Once a child is born, neglect may involve a parent or carer failing to:

- Provide adequate food, clothing and shelter (including exclusion from home or abandonment)
- Protect a child from physical and emotional harm or danger
- Ensure adequate supervision (including the use of inadequate care-givers)
- Ensure access to appropriate medical care or treatment

It may also include neglect of, or unresponsiveness to, a child's basic emotional needs.

## **Appendix 2: safer recruitment and DBS checks – policy and procedures**

We will record all information on the checks carried out in the school's single central record (SCR). Copies of these checks, where appropriate, will be held in individuals' personnel files. We follow requirements and best practice in retaining copies of these checks, as set out below.

### **Appointing new staff**

When appointing new staff, we will:

- Verify their identity
- Obtain (via the applicant) an enhanced Disclosure and Barring Service (DBS) certificate, including barred list information for those who will be engaging in regulated activity (see definition below). We will not keep a copy of this for longer than 6 months
- Obtain a separate barred list check if they will start work in regulated activity before the DBS certificate is available
- Verify their mental and physical fitness to carry out their work responsibilities
- Verify their right to work in the UK. We will keep a copy of this verification for the duration of the member of staff's employment and for 2 years afterwards
- Verify their professional qualifications, as appropriate
- Ensure they are not subject to a prohibition order if they are employed to be a teacher
- Carry out further additional checks, as appropriate, on candidates who have lived or worked outside of the UK, including (where relevant) any teacher sanctions or restrictions imposed by a European Economic Area professional regulating authority, and criminal records checks or their equivalent

We will ensure that appropriate checks are carried out to ensure that individuals are not disqualified under the Childcare Disqualification (Regulations) 2009 and Childcare Act 2006. Where we take a decision that an individual falls outside of the scope of these regulations and we do not carry out such checks, we will retain a record of our assessment on the individual's personnel file. This will include our evaluation of any risks and control measures put in place, and any advice sought.

**Regulated activity** means a person who will be:

- Responsible, on a regular basis in a school or college, for teaching, training, instructing, caring for or supervising children
- Carrying out paid, or unsupervised unpaid, work regularly in a school or college where that work provides an opportunity for contact with children
- Engaging in intimate or personal care or overnight activity, even if this happens only once and regardless of whether they are supervised or not

### **Existing staff**

If we have concerns about an existing member of staff's suitability to work with children, we will carry out all the relevant checks as if the individual was a new member of staff. We will also do this if an individual moves from a post that is not regulated activity to one that is. We will refer to the DBS anyone who has harmed, or poses a risk of harm, to a child or vulnerable adult:

- Where the 'harm test' is satisfied in respect of the individual (i.e. that no action or inaction occurred but the present risk that it could was significant)
- Where the individual has received a caution or conviction for a relevant offence
- If there is reason to believe that the individual has committed a listed relevant offence, under the [Safeguarding Vulnerable Groups Act 2006 \(Prescribed Criteria and Miscellaneous Provisions\) Regulations 2009](#)
- If the individual has been removed from working in regulated activity (paid or unpaid) or would have been removed if they had not left

### **Agency and third-party staff**

We will obtain written notification from any agency or third-party organisation that it has carried out the necessary safer recruitment checks that we would otherwise perform. We will also check that the person presenting themselves for work is the same person on whom the checks have been made.

### **Contractors**

We will ensure that any contractor, or any employee of the contractor, who is to work at the school has had the appropriate level of DBS check. This will be:

- An enhanced DBS check with barred list information for contractors engaging in regulated activity
- An enhanced DBS check, not including barred list information, for all other contractors who are not in regulated activity but whose work provides them with an opportunity for regular contact with children

We will obtain the DBS check for self-employed contractors.

We will not keep copies of such checks for longer than 6 months.

Contractors who have not had any checks will not be allowed to work unsupervised or engage in regulated activity under any circumstances.

We will check the identity of all contractors and their staff on arrival at the school.

### **Trainee/student teachers**

Where applicants for initial teacher training are salaried by us, we will ensure that all necessary checks are carried out.

Where trainee teachers are fee-funded, we will obtain written confirmation from the training provider that necessary checks have been carried out and that the trainee has been judged by the provider to be suitable to work with children.

In both cases, this includes checks to ensure that individuals are not disqualified under the Childcare Disqualification (Regulations) 2009 and Childcare Act 2006.

### **Volunteers**

We will:

- Never leave an unchecked volunteer unsupervised or allow them to work in regulated activity
- Obtain an enhanced DBS check with barred list information for all volunteers who are new to working in regulated activity
- Obtain an enhanced DBS check without barred list information for all volunteers who are not in regulated activity, but who have an opportunity to come into contact with children on a regular basis, for example, supervised volunteers
- Carry out a risk assessment when deciding whether to seek an enhanced DBS check for any volunteers not engaging in regulated activity
- Ensure that appropriate checks are carried out to ensure that individuals are not disqualified under the Childcare Disqualification (Regulations) 2009 and Childcare Act 2006. Where we decide that an individual falls outside of the scope of these regulations and we do not carry out such checks, we will retain a record of our assessment. This will include our evaluation of any risks and control measures put in place, and any advice sought

### **Governors**

- All governors will have an enhanced DBS check without barred list information and section 128 check
- They will have an enhanced DBS check with barred list information if working in regulated activity.

All trustees, proprietors and local governors will also have the following checks:

- Right to work in the UK
- Other checks deemed necessary if they have lived or worked outside the UK

### **Adults who supervise pupils on work experience**

When organising work experience, we will ensure that policies and procedures are in place to protect children from harm.

We will also consider whether it is necessary for barred list checks to be carried out on the individuals who supervise a pupil under 16 on work experience. This will depend on the specific circumstances of the work experience, including the nature of the supervision, the frequency of the activity being supervised, and whether the work is regulated activity.

### **Pupils staying with host families**

Where the school makes arrangements for pupils to be provided with care and accommodation by a host family to which they are not related (for example, during a foreign exchange visit), we will request enhanced DBS checks with barred list information on those people.

Where the school is organising such hosting arrangements overseas and host families cannot be checked in the same way, we will work with our partner schools abroad to ensure that similar assurances are undertaken prior to the visit.

### **Appendix 3: allegations of abuse made against staff**

This section of this policy applies to all cases in which it is alleged that a current member of staff or volunteer has:

- Behaved in a way that has harmed a child, or may have harmed a child, or
- Possibly committed a criminal offence against or related to a child, or
- Behaved towards a child or children in a way that indicates he or she would pose a risk of harm to children

It applies regardless of whether the alleged abuse took place in the school. Allegations against a teacher who is no longer teaching and historical allegations of abuse will be referred to the police.

We will deal with any allegation of abuse against a member of staff or volunteer very quickly, in a fair and consistent way that provides effective child protection while also supporting the individual who is the subject of the allegation.

Our procedures for dealing with allegations will be applied with common sense and judgement.

### **Suspension**

Suspension will not be the default position, and will only be considered in cases where there is reason to suspect that a child or other children is/are at risk of harm, or the case is so serious that it might be grounds for dismissal. In such cases, we will only suspend an individual if we have considered all other options available and there is no reasonable alternative.

Based on an assessment of risk, we will consider alternatives such as:

- Redeployment within the school so that the individual does not have direct contact with the child or children concerned
- Providing an assistant to be present when the individual has contact with children
- Redeploying the individual to alternative work in the school so that they do not have unsupervised access to children
- Moving the child or children to classes where they will not come into contact with the individual, making it clear that this is not a punishment and parents have been consulted
- Temporarily redeploying the individual to another role in a different location, for example to an alternative school or other work for the

### **Definitions for outcomes of allegation investigations**

- **Substantiated:** there is sufficient evidence to prove the allegation
- **Malicious:** there is sufficient evidence to disprove the allegation and there has been a deliberate act to deceive
- **False:** there is sufficient evidence to disprove the allegation
- **Unsubstantiated:** there is insufficient evidence to either prove or disprove the allegation (this does not imply guilt or innocence)

### **Procedure for dealing with allegations**

In the event of an allegation that meets the criteria above, the headteacher (or chair of governors where the headteacher is the subject of the allegation) – the 'case manager' – will take the following steps:

- Immediately discuss the allegation with the designated officer at the local authority. This is to consider the nature, content and context of the allegation and agree a course of action, including whether further enquiries are necessary to enable a decision on how to proceed, and whether it is necessary to involve the police and/or children's social care services. (The case manager may, on occasion, consider it necessary to involve the police *before* consulting the designated officer – for example, if the accused individual is deemed to be an immediate risk to children or there is evidence of a possible criminal offence. In such cases, the case manager will notify the designated officer as soon as practicably possible after contacting the police)

- Inform the accused individual of the concerns or allegations and likely course of action as soon as possible after speaking to the designated officer (and the police or children's social care services, where necessary). Where the police and/or children's social care services are involved, the case manager will only share such information with the individual as has been agreed with those agencies
- Where appropriate (in the circumstances described above), carefully consider whether suspension of the individual from contact with children at the school is justified or whether alternative arrangements such as those outlined above can be put in place. Advice will be sought from the designated officer, police and/or children's social care services, as appropriate
- If immediate suspension is considered necessary, agree and record the rationale for this with the designated officer. The record will include information about the alternatives to suspension that have been considered, and why they were rejected. Written confirmation of the suspension will be provided to the individual facing the allegation or concern within 1 working day, and the individual will be given a named contact at the school and their contact details
- If it is decided that no further action is to be taken in regard to the subject of the allegation or concern, record this decision and the justification for it and agree with the designated officer what information should be put in writing to the individual and by whom, as well as what action should follow both in respect of the individual and those who made the initial allegation
- If it is decided that further action is needed, take steps as agreed with the designated officer to initiate the appropriate action in school and/or liaise with the police and/or children's social care services as appropriate
- Provide effective support for the individual facing the allegation or concern, including appointing a named representative to keep them informed of the progress of the case and consider what other support is appropriate
- Inform the parents or carers of the child/children involved about the allegation as soon as possible if they do not already know (following agreement with children's social care services and/or the police, if applicable). The case manager will also inform the parents or carers of the requirement to maintain confidentiality about any allegations made against teachers (where this applies) while investigations are ongoing. Any parent or carer who wishes to have the confidentiality restrictions removed in respect of a teacher will be advised to seek legal advice
- Keep the parents or carers of the child/children involved informed of the progress of the case and the outcome, where there is not a criminal prosecution, including the outcome of any disciplinary process (in confidence)
- Make a referral to the DBS where it is thought that the individual facing the allegation or concern has engaged in conduct that harmed or is likely to harm a child, or if the individual otherwise poses a risk of harm to a child

We will inform Ofsted of any allegations of serious harm or abuse by any person living, working, or looking after children at the premises (whether the allegations relate to harm or abuse committed on the premises or elsewhere), and any action taken in respect of the allegations. This notification will be made as soon as reasonably possible and always within 14 days of the allegations being made.

If the school is made aware that the secretary of state has made an interim prohibition order in respect of an individual, we will immediately suspend that individual from teaching, pending the findings of the investigation by the National College for Teaching and Leadership.



Where the police are involved, wherever possible the governing board will ask the police at the start of the investigation to obtain consent from the individuals involved to share their statements and evidence for use in the school's disciplinary process, should this be required at a later point.

### **Timescales**

- Any cases where it is clear immediately that the allegation is unsubstantiated or malicious will be resolved within 1 week
- If the nature of an allegation does not require formal disciplinary action, we will institute appropriate action within 3 working days
- If a disciplinary hearing is required and can be held without further investigation, we will hold this within 15 working days

### **Specific actions**

#### **Action following a criminal investigation or prosecution**

The case manager will discuss with the local authority's designated officer whether any further action, including disciplinary action, is appropriate and, if so, how to proceed, taking into account information provided by the police and/or children's social care services.

#### **Conclusion of a case where the allegation is substantiated**

If the allegation is substantiated and the individual is dismissed or the school ceases to use their services, or the individual resigns or otherwise ceases to provide their services, the case manager and the school's personnel adviser will discuss with the designated officer whether to make a referral to the DBS for consideration of whether inclusion on the barred lists is required.

If the individual concerned is a member of teaching staff, the case manager and personnel adviser will discuss with the designated officer whether to refer the matter to the NCTL to consider prohibiting the individual from teaching.

#### **Individuals returning to work after suspension**

If it is decided on the conclusion of a case that an individual who has been suspended can return to work, the case manager will consider how best to facilitate this.

The case manager will also consider how best to manage the individual's contact with the child or children who made the allegation, if they are still attending the school.

#### **Unsubstantiated or malicious allegations**

If an allegation is shown to be deliberately invented, or malicious, the headteacher, or other appropriate person in the case of an allegation against the headteacher, will consider whether any disciplinary action is appropriate against the pupil(s) who made it, or whether the police should be asked to consider whether action against those who made the allegation might be appropriate, even if they are not a pupil.

### **Confidentiality**

The school will make every effort to maintain confidentiality and guard against unwanted publicity while an allegation is being investigated or considered.

The case manager will take advice from the local authority's designated officer, police and children's social care services, as appropriate, to agree:

- Who needs to know about the allegation and what information can be shared
- How to manage speculation, leaks and gossip, including how to make parents or carers of a child/children involved aware of their obligations with respect to confidentiality
- What, if any, information can be reasonably given to the wider community to reduce speculation
- How to manage press interest if, and when, it arises

## **Record-keeping**

The case manager will maintain clear records about any case where the allegation or concern meets the criteria above and store them on the individual's confidential personnel file for the duration of the case. Such records will include:

- A clear and comprehensive summary of the allegation
- Details of how the allegation was followed up and resolved
- Notes of any action taken and decisions reached (and justification for these, as stated above)

If an allegation or concern is not found to have been malicious, the school will retain the records of the case on the individual's confidential personnel file, and provide a copy to the individual. We will retain these records at least until the individual has reached normal pension age, or for 10 years from the date of the allegation if that is longer.

The records of any allegation that is found to be malicious will be deleted from the individual's personnel file.

## **References**

When providing employer references, we will not refer to any allegation that has been proven to be false, unsubstantiated or malicious or any history of allegations where all such allegations have been proven to be false, unsubstantiated or malicious.

## **Learning lessons**

After any cases where the allegations are substantiated, we will review the circumstances of the case with the local authority's designated officer to determine whether there are any improvements that we can make to the school's procedures or practice to help prevent similar events in the future.

This will include consideration of (as applicable):

- Issues arising from the decision to suspend the member of staff
- The duration of the suspension
- Whether or not the suspension was justified
- The use of suspension when the individual is subsequently reinstated. We will consider how future investigations of a similar nature could be carried out without suspending the individual

## **Appendix 4: specific safeguarding issues**

### **Children missing from education**

A child going missing from education is a potential indicator of abuse or neglect, and such children are at risk of being victims of harm, exploitation or radicalisation.

There are many circumstances where a child may become missing from education, but some children are particularly at risk. These include children who:

- Are at risk of harm or neglect
- Come from Gypsy, Roma, or Traveller families
- Come from the families of service personnel
- Go missing or run away from home or care
- Are supervised by the youth justice system
- Cease to attend a school
- Come from new migrant families

We will follow our procedures for unauthorised absence and for dealing with children who go missing from education, particularly on repeat occasions, to help identify the risk of abuse and neglect, including sexual exploitation, and to help prevent the risks of going missing in future. This includes informing the local authority if a child leaves the school without a new school being named, and adhering to requirements with respect to sharing information with the local authority, when applicable, when removing a child's name from the admission register at non-standard transition points.

Staff will be trained in signs to look out for and the individual triggers to be aware of when considering the risks of potential safeguarding concerns which may be related to being missing, such as travelling to conflict zones, FGM and forced marriage.

If a staff member suspects that a child is suffering from harm or neglect, we will follow local child protection procedures, including with respect to making reasonable enquiries. We will make an immediate referral to the local authority children's social care team, and the police, if the child is in immediate danger or at risk of harm.

### **Child sexual exploitation**

Child sexual exploitation (CSE) is a form of sexual abuse where children are sexually exploited for money, power or status.

This can involve violent, humiliating and degrading sexual assaults, but does not always involve physical contact and can happen online. For example, young people may be persuaded or forced to share sexually explicit images of themselves, have sexual conversations by text, or take part in sexual activities using a webcam.

Children or young people who are being sexually exploited may not understand that they are being abused. They often trust their abuser and may be tricked into believing they are in a loving, consensual relationship.

If a member of staff suspects CSE, they will discuss this with the DSL. The DSL will trigger the local safeguarding procedures, including a referral to the local authority's children's social care team and the police, if appropriate.

Indicators of sexual exploitation can include a child:

- Appearing with unexplained gifts or new possessions
- Associating with other young people involved in exploitation
- Having older boyfriends or girlfriends
- Suffering from sexually transmitted infections or becoming pregnant
- Displaying inappropriate sexualised behaviour
- Suffering from changes in emotional wellbeing
- Misusing drugs and/or alcohol
- Going missing for periods of time, or regularly coming home late
- Regularly missing school or education, or not taking part in education

## **FGM**

The DSL will make sure that staff have access to appropriate training to equip them to be alert to children affected by FGM or at risk of FGM.

Section 7.3 of this policy sets out the procedures to be followed if a staff member discovers that an act of FGM appears to have been carried out or suspects that a pupil is at risk of FGM.

Indicators that FGM has already occurred include:

- A pupil confiding in a professional that FGM has taken place
- A mother/family member disclosing that FGM has been carried out
- A family/pupil already being known to social services in relation to other safeguarding issues
- A girl:
  - Having difficulty walking, sitting or standing, or looking uncomfortable
  - Finding it hard to sit still for long periods of time (where this was not a problem previously)
  - Spending longer than normal in the bathroom or toilet due to difficulties urinating
  - Having frequent urinary, menstrual or stomach problems
  - Avoiding physical exercise or missing PE
  - Being repeatedly absent from school, or absent for a prolonged period
  - Demonstrating increased emotional and psychological needs – for example, withdrawal or depression, or significant change in behaviour
  - Being reluctant to undergo any medical examinations
  - Asking for help, but not being explicit about the problem
  - Talking about pain or discomfort between her legs

Potential signs that a pupil may be at risk of FGM include:

- The girl's family having a history of practising FGM (this is the biggest risk factor to consider)
- FGM being known to be practised in the girl's community or country of origin
- A parent or family member expressing concern that FGM may be carried out
- A family not engaging with professionals (health, education or other) or already being known to social care in relation to other safeguarding issues
- A girl:
  - Having a mother, older sibling or cousin who has undergone FGM
  - Having limited level of integration within UK society
  - Confiding to a professional that she is to have a "special procedure" or to attend a special occasion to "become a woman"
  - Talking about a long holiday to her country of origin or another country where the practice is prevalent, or parents stating that they or a relative will take the girl out of the country for a prolonged period
  - Requesting help from a teacher or another adult because she is aware or suspects that she is at immediate risk of FGM
  - Talking about FGM in conversation – for example, a girl may tell other children about it (although it is important to take into account the context of the discussion)
  - Being unexpectedly absent from school
  - Having sections missing from her 'red book' (child health record) and/or attending a travel clinic or equivalent for vaccinations/anti-malarial medication

The above indicators and risk factors are not intended to be exhaustive.

## **Breast Ironing**

Breast Ironing also known as Breast Flattening is the process whereby the breasts of young pubescent girls are ironed, massaged and/or pounded down through the use of hard or heated objects in order for the breasts to disappear or to delay the development of the breasts.

Breast Ironing is a harmful cultural practice and is child abuse. The girl generally believes that the practice is being carried out for her own good and she will often remain silent. Young pubescent girls usually aged approximately 9 to 15 years old and from practising communities are most at risk of breast ironing. Professionals working with children and young people must be able to identify the signs and symptoms of girls who are at risk of or have undergone breast ironing.

Some indicators that a girl has undergone breast ironing are as follows:

- Unusual behaviour after an absence from school or college including depression, anxiety, aggression, withdrawn etc
- Reluctance in undergoing normal medical examinations
- Some girls may ask for help, but may not be explicit about the problem due to embarrassment or fear
- Fear of changing for physical activities due to scars showing or bandages being visible.

As with all concerns, staff must inform the Designated Safeguarding Lead immediately if there are indicators that breast ironing may have occurred.

## **Forced marriage**

Forcing a person into marriage is a crime. A forced marriage is one entered into without the full and free consent of one or both parties and where violence, threats, or any other form of coercion is used to cause a person to enter into a marriage. Threats can be physical or emotional and psychological.

Staff will receive training around forced marriage and the presenting symptoms. We are aware of the 'one chance' rule, i.e. we may only have one chance to speak to the potential victim and only one chance to save them.

If a member of staff suspects that a pupil is being forced into marriage, they will speak to the pupil about their concerns in a secure and private place. They will then report this to the DSL.

The DSL will:

- Speak to the pupil about the concerns in a secure and private place
- Activate the local safeguarding procedures and refer the case to the local authority's designated officer
- Seek advice from the Forced Marriage Unit on 020 7008 0151 or [fmu@fco.gov.uk](mailto:fmu@fco.gov.uk)
- Refer the pupil to an education welfare officer, pastoral tutor, learning mentor, or school counsellor, as appropriate

## **Gangs, Child Criminal Exploitation, County Lines, and Serious Violence**

Keeping Children Safe In Education (DfE 2019) states that "*Criminal exploitation of children is a geographically widespread form of harm that is a typical feature of county lines criminal activity: drug networks or gangs groom and exploit children and young people to carry drugs and money from urban areas to suburban and rural areas, market and seaside towns.*"

The following information on gang activity is based on Section 12 of the London Child Protection procedures - Safeguarding Children affected by Gang Activity / Serious Youth Violence.

There are a number of areas in which young people are put at risk by gang activity, both through participation in and as victims of gang violence which can be in relation to their peers or to a gang-involved adult in their household.

A child who is affected by gang activity or serious youth violence may have suffered, or may be likely to suffer, significant harm through physical, sexual and emotional abuse or neglect. Groups of children often gather together in public places to socialise, and peer association is an essential feature of most children's transition to adulthood. Groups of children can be disorderly and/or anti-social without engaging in criminal activity. Defining a gang is difficult, however it can be broadly described as a relatively durable, predominantly street-based group of children who see themselves (and are seen by others) as a discernible group for whom crime and violence is integral to the group's identity.

Circumstances which can foster the emergence of gangs include:

- Areas with a high level of social and economic exclusion and mobility (which weakens the ties of kinship and friendship and the established mechanisms of informal control and social support);
- Areas made up of predominantly social housing, and especially where it is high rise / high density social housing. There is a perfect correlation in London with 'gang neighbourhoods' and being amongst the 20% most deprived government lower level super output areas (based on the Indices of Multiple Deprivation 2007);
- Areas with poor performing schools - in terms of leadership, positive ethos, managing behaviour and partnership working;
- Lack of access to pro-social activities (e.g. youth service) and to vocational training and opportunities;
- Communities who have experienced war situations prior to arrival in the UK;
- Areas with a high level of gang activity / peer pressure and intimidation, particularly if the family is denying this or is in fear of the gangs; and
- Family members involved in gang activity and criminality.

Many parents are aware of the widespread perception that the gang problem is ultimately a product of poor parenting and that the solution lies in assuming responsibility for their children. However, they feel unable either to control or to protect their children. Therefore, it is important that professionals report any concerns, no matter how small, so families can be supported at the earliest possible opportunity.

The Serious Violence Strategy, which was introduced by the government in 2018, identifies offences such as homicides and knife and gun crime as key factors which account for around 1% of all recorded crime. The impact of serious violent crime on individuals and the community is significant. Tackling serious violence is not a law enforcement issue alone; it requires a multiple-strand approach involving a range of partners across different sectors. We work with agencies including the Police to ensure our children are educated about all the potential consequences of serious and violent crimes.

### **Preventing radicalisation**

Radicalisation refers to the process by which a person comes to support terrorism and forms of extremism. Extremism is vocal or active opposition to fundamental British values, such as democracy, the rule of law, individual liberty, and mutual respect and tolerance of different faiths and beliefs.

Schools have a duty to prevent children from being drawn into terrorism. The DSL will undertake Prevent awareness training and make sure that staff have access to appropriate training to equip them to identify children at risk.

We will assess the risk of children in our school being drawn into terrorism. This assessment will be based on an understanding of the potential risk in our local area, in collaboration with our local safeguarding children board and local police force.

We will ensure that suitable internet filtering is in place, and equip our pupils to stay safe online at school and at home.

There is no single way of identifying an individual who is likely to be susceptible to an extremist ideology. Radicalisation can occur quickly or over a long period.

Staff will be alert to changes in pupils' behaviour.

The government website [Educate Against Hate](#) and charity [NSPCC](#) say that signs that a pupil is being radicalised can include:

- Refusal to engage with, or becoming abusive to, peers who are different from themselves
- Becoming susceptible to conspiracy theories and feelings of persecution
- Changes in friendship groups and appearance
- Rejecting activities they used to enjoy
- Converting to a new religion
- Isolating themselves from family and friends
- Talking as if from a scripted speech
- An unwillingness or inability to discuss their views
- A sudden disrespectful attitude towards others
- Increased levels of anger
- Increased secretiveness, especially around internet use
- Expressions of sympathy for extremist ideologies and groups, or justification of their actions
- Accessing extremist material online, including on Facebook or Twitter
- Possessing extremist literature
- Being in contact with extremist recruiters and joining, or seeking to join, extremist organisations

Children who are at risk of radicalisation may have low self-esteem, or be victims of bullying or discrimination. It is important to note that these signs can also be part of normal teenage behaviour – staff should have confidence in their instincts and seek advice if something feels wrong.

If staff are concerned about a pupil, they will follow our procedures set out in section 7.5 of this policy, including discussing their concerns with the DSL.

Staff should **always** take action if they are worried.

### **SEND Pupils**

It is important to recognise and be alert to children with Special Educational Needs and Disabilities (SEND) potentially being at a higher risk of all forms of abuse including peer bullying. SEND pupils are likely to be more vulnerable for a number of reasons including communication barriers and, in some cases, a dependency on others for physical and emotional support.

There are also additional challenges in safeguarding children with Special Educational Needs and Disabilities including:

- Behaviour, mood and injury may relate to possible abuse and not just their SEN or disability
- Higher risk of peer group isolation
- Disproportionate impact of bullying
- Difficulties with communication

The SENCo meets regularly with the DSL to ensure the school is safeguarding vulnerable children and that potential external sources of support have been explored where appropriate.

### **Peer on Peer Abuse**

The school is aware of the potential of peer on peer abuse which can manifest in a number of ways such as bullying (including cyber-bullying), gender-based violence/sexual assaults and sexting.

On 12 April 2019, a new law banning the invasive practice of 'upskirting' came into force across England and Wales and offenders can now be arrested and sent to prison. Keeping Children Safe in Education (DfE 2019) describes 'upskirting' as

*"typically involv(ing) taking a picture under a person's clothing without them knowing, with the intention of viewing their genitals or buttocks to obtain sexual gratification, or cause the victim humiliation, distress or alarm".*

The school frequently communicates with parents and children about the issues arising from inappropriate use of social media outside of school. We also inform parents when it is reported that children have been involved in online activity leading to disputes being brought into school. If the school becomes aware of any activity outside school that carries a risk of significant harm for a child, the school will discuss the matter with Social Care and any other appropriate agency such as the Police.

### **Online Safety**

Children at St Mary's are not permitted to bring mobile devices into school. The technology available at school has safeguards in place to ensure children can access inappropriate content. Where there is reason to believe a child may be accessing inappropriate content outside of school, or may be involved in or experiencing online abuse, this will be brought to the attention of the child's parents. A referral may also be made to Social Care and Police if there is a concern for their child's safety and well-being.

Staff will refer to the Teaching Online Safety in School guidance (DfE 2019) to support current teaching on the topic in PSHE related lessons and in subjects including Computer Science.

### **Domestic Abuse**

The cross-government definition of domestic violence and abuse is: any incident or pattern of incidents of controlling, coercive, threatening behaviour, violence or abuse between those aged 16 or over who are, or have been, intimate partners or family members regardless of gender or sexuality. The abuse can encompass, but is not limited to: psychological; physical; sexual; financial; and emotional.

All children can witness and be adversely affected by domestic abuse in the context of their home life where domestic abuse occurs between family members. Exposure to domestic abuse and/or violence can have a serious, long lasting emotional and psychological impact on children. In some cases, a child may blame themselves for the abuse or may have had to leave the family home as a result.

The Office for National Statistics (ONS) stated in 2019 that 1 in 4 women and 1 in 6 men will experience some form of domestic abuse during their adult life. This suggests that a significant number of children are at risk of the impact of domestic abuse so any indications that a child has been exposed to any form of domestic abuse must be reported to the DSL without delay.

### **Sexual Violence and Harassment between Children in School**

The Keeping Children Safe in Education guidance (DfE 2020) states that staff should be aware of the importance of:

- making clear that sexual violence and sexual harassment is not acceptable, will never be tolerated and is not an inevitable part of growing up;
- not tolerating or dismissing sexual violence or sexual harassment as "banter", "part of growing up", "just having a laugh", or "boys being boys"; and
- challenging behaviours (potentially criminal in nature) such as grabbing bottoms, breasts and genitalia and lifting up skirts. Dismissing or tolerating such behaviours risks normalising them.

Any incidents that could potentially be viewed as sexual violence or harassment must be reported to the DSL without delay.



## **Gender Dysphoria**

Gender dysphoria is the description used for a young person whose birth gender does not match the way that they feel inside. This may be a child born male who identifies as a girl or vice versa. A number of young people are presenting with gender identification that is neither male or female, or a combination of both. This is often referred to as non-binary or gender-fluid but there are many other definitions that may also be used.

A child's gender expression is not a child protection concern if they are being supported by their family. Supporting children and young people to live as their affirmed gender is very important to nurture self-esteem and self-confidence. In some cases a child's gender expression may change but allowing them freedom of expression is vital to maintaining good mental health.

The school recognises that some young people may struggle with conflicting feelings or they may feel generally unsupported in relation to their gender expression. In these cases, the school will review if the needs of the child are being met and will consider appropriate intervention to safeguard the child's well-being.

## **Checking the identity and suitability of visitors**

All visitors will be required to verify their identity by showing photo identification, which may include an identification badge provided by the company they are working for.

If the visitor is unknown to the setting, we will check their credentials and reason for visiting before allowing them to enter the setting. Visitors should be ready to produce identification.

Visitors are expected to sign in using the electronic visitors' book and wear a visitor's badge.

All visitors to our setting, including visiting speakers, will be accompanied by a member of staff at all times. We will not invite into the school any speaker who is known to disseminate extremist views, and will carry out appropriate checks to ensure that any individual or organisation using school facilities is not seeking to disseminate extremist views or radicalise pupils or staff.

## **Non-collection of children**

If a child is not collected at the end of the session/day, we will contact the parents. If we cannot get hold of the parents, we will then try the emergency contact details that the parents have provided us with.

If there is still an issue with collection; the parents and emergency contacts are unobtainable and quite some time has passed, the DSL will then make a decision as to whether they will contact children's services.

In this time, the children will be cared for by school staff.

## **Missing pupils**

The DSL works closely with H&F Education Welfare and the ACE Team to ensure the whereabouts of all children on roll at St Joseph's are known.

All parents are informed they must contact the school every day their child is absent unless the school has agreed this is not necessary, for example, if a child has a serious illness that requires them to remain absent for a set period.

The school periodically requests parents to check the contact numbers held by the school so we can communicate promptly with a number of adults if the whereabouts of a child is unknown. If there are any concerns for a child absent from school, the DSL (or a deputy) will work with the ACE Team to ensure the child is safe and returns to school.

## **Therapeutic Services / Emotional Well-being**

St Mary's offers an in-house play therapist provision to support children presenting with emotional issues. These may manifest through behaviour changes or a change in academic work. We also have an ELSA (Emotional Literacy Support Assistant) and staff that lead regular Lego Therapy sessions for targeted pupils.

It is common for children to identify themselves that they are struggling and need to work through a problem. Parents also approach the school to request support for their children if

the family is experiencing difficulties such as relationship breakdown, illness, housing issues, financial stress and bereavement.

The situation of all children who present as having a child protection or safeguarding concern are discussed by the DSL and SLT for an initial assessment process to determine how the school can best support the individual child with their situation.

Where it is identified that a child requires specialist support, the DSL and SLT will liaise in order to make referrals to the appropriate agencies, for example, CAMHS or Social Care.

The DSL is the Mental Health Lead at St Mary's, ensuring that children, parents and staff have a point of contact to seek support and information. The SENCO has also had mental health training. We seek to support children's wellbeing through protective factors including a sense of belonging, positive relationships, a secure education, a varied curriculum and by promoting a culture of talking to an adult about any concerns.

### **Family Support (H&F)**

The Munro Review (2011) recommended the government place a statutory duty on local authorities and their partners to ensure enough provision of early intervention services. Under this duty, local authorities need to make every child and family who fall beneath child protection thresholds an early help offer of tailored services and resources.

To ensure children and / or their families are supported at the earliest possible opportunity, staff should share any concern, no matter how small, with the DSL. An assessment can then be made to determine if support and services could be offered to the family through the school or via external agencies.

The DSL meets regularly with the SENCO to ensure that there is a package of support for the most vulnerable children and / or their families.

### **Impact of COVID-19 Pandemic**

The COVID-19 pandemic that led to significant changes to society from March 2020 will have had some level of impact on families.

Many children did not attend school-based education between March and September 2020 and some were not able to fully access the remote learning provision at all times. This raises a level of concern for the impact on children's educational progress.

Adults spent more time in the family home owing to health concerns or being placed on the furlough scheme. Some families may have enjoyed spending more time together but some families may have found this stressful and relationships may have been difficult.

It is difficult to estimate the impact of COVID-19 on children and families so we must be alert to any indicators that a child or family members may be experiencing mental health problems, forms of domestic abuse, or any other form of concern such as online safety or neglect.

Therefore, any concern, no matter how small, must be reported to the DSL immediately.

### **Additional Support**

Staff and volunteers are actively encouraged to see the DSL if they require more information or training about any aspect of child protection or safeguarding.

The Governor with responsibility for safeguarding – Mr Charles – can be contacted through written correspondence via the school office. Please ensure the letter is placed in a sealed envelope, clearly addressed, and marked as private and confidential. Mr Romain may also be contacted via email address [acharles@stmarysrc.lbhf.sch.uk](mailto:acharles@stmarysrc.lbhf.sch.uk)

### **Additional Guidance**

The DSL has access to a number of publications and resources for anyone requiring additional information or support. Please speak directly to the DSL if you require such materials.

Alternatively, you will find respected safeguarding guidance from the following sources: H&F

Child Protection Referral Procedures ([Familyservices@lbhf.gov.uk](mailto:Familyservices@lbhf.gov.uk))

H&F Local Safeguarding Board ([www.rbkc.gov.uk/lscb](http://www.rbkc.gov.uk/lscb))

Keeping Children Safe In Education (DfE September 2019 – [www.gov.uk](http://www.gov.uk))

Working Together To Safeguard Children (DfE July 2018 – [www.gov.uk](http://www.gov.uk))

Child Sexual Exploitation (DfE February 2017 – [www.gov.uk](http://www.gov.uk))

Prevent Duty (HM Government 2015 – [www.gov.uk](http://www.gov.uk))

Multi-agency Statutory Guidance on FGM (HM Government April 2016 – [www.gov.uk](http://www.gov.uk))

London Child Protection Procedures ([www.londoncp.co.uk](http://www.londoncp.co.uk))

NSPCC ([www.nspcc.org.uk](http://www.nspcc.org.uk))

ThinkUKnow ([www.thinkuknow.co.uk](http://www.thinkuknow.co.uk))

CEOP ([ceop.police.uk/safety-centre](http://ceop.police.uk/safety-centre))

Teaching Online Safety in School (DfE June 2019)

### **Important Telephone Numbers**

Staff and volunteers may also speak to any of the services below:

H&F Social Care and H&F LADO: 020 8753 6600

NSPCC: 0808 800 5000

Police: 999 (emergency) or 101 (non-emergency)

DfE Extremism Team: 020 7340 7264

National Domestic Abuse Helpline (24 hours) 0808 2000 247