

Religious Education

Creation & Covenant



Using Genesis and the second account of Creation also known as 'The Fall' we will analyse the metaphorical meaning and symbolism of Eden, Adam and Eve and the serpent. With the Gospel of John as our foundation we will look at the notion of 'original sin', Pope Francis' encyclical Laudato Si 66, the sacrament of Baptism, what a Covenant is and the work of Fr George Lemaitre a Catholic priest who was also a scientist that proposed the 'Big Bang' theory.

Shared Reading



Reading our Autumn 1 text '**Holes**' we will **listen, read, explore, predict, infer, retrieve** and **summarise** the **text** whilst using high quality **vocabulary**.

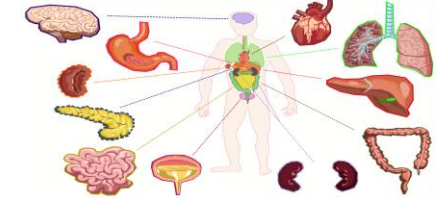
To be able to predict and imagine what might happen next in a considered piece of writing, to retrieve and infer using both teacher modelling but also guided questions and be able to summarise what's happened in the text and show good understanding on an individual basis.

Science

The Human Body

Key areas of learning

- Understanding of the **heart** and how it works
- **Blood vessels** & their role **transporting blood**
- Explore the links between **heart rate** and **heart use**
- Explore **variables** in an experiment
- Explore links between **blood circulation, heart** and **lungs**



Maths

Place Value	# to 1 Million, # to 10 million, read & write to 10 million, powers of 10, number line to 10 million, compare & order integers, round integers, negative #.
Addition, Subtraction, Multiplication, Division	+ & - integers, common factors, common multiples, rules of divisibility, primes to 100, square and cube numbers, multiply 4digit by 2 digit, solving multiplication problems.



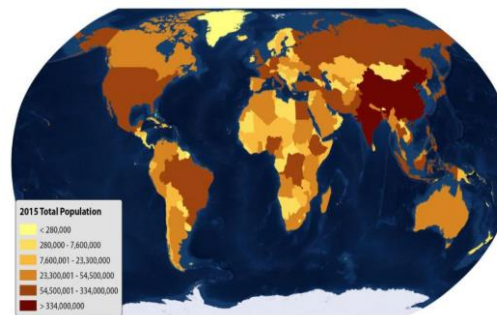
Year 6

Autumn 1

Geography

Spatial Sense

- Understanding lines of **longitude** and **latitude** and **equator**
- Understanding how **climate** is linked to latitude, longitude and equator
- **24 hour time zones** and how is it shown
- Our **round spherical earth** and how its represented through different types of maps
- How can **data** on **places, people, environments** be represented via maps
- Explore **knowledge** and **importance** of **maps**



English

Key writing skills covered in our new unit 'Paperman':

- Time Adverbials
- Complex sentences
- Short sentences for effect
- Similes
- Repetition for effect
- Pathetic fallacy
- Imperative verbs
- Rhetorical questions
- Passive voice
- Adverbial openers
- Punctuation including semi colons

PE

Year 6 have Cricket on **Mondays**, PE on **Tuesdays** and are expected to come to school with full kit in their PE bag. They also have swimming on **Wednesday** afternoon, they need to come to school on that day with goggles, swimming hat, swimming costume/trunks, towel & plastic bag for wet kit.



Art & DT

Italian Renaissance

- The School of Athens & Vitruvian Man.
- Learning about Leonardo da Vinci: Anatomical drawings, Sfumato, The Last Supper.
- Michelangelo & 'The Sistine Chapel'

