



'Growing together in God's love and care'

# WELCOME TO YEAR 2 CURRICULUM PRESENTATION



# Routines

- Morning - you can start to arrive from 8:35am.
- Year 2 classroom doesn't open until 8:45am.
- All children should be in the class by 8:50am.
- End of the school day is 3:15pm.
  
- Children in Year 2, are expected to come to school in their PE kit and they will remain in this all day on PE days.
- Please take into account the weather- children can wear grey jogging bottoms in the autumn and winter. In the summer, children wear black shorts.

## PE kit days:

- Wednesday (PE)
- Monday (Autumn 1, Tennis)

## Year 2 timetable

Year 2 – Miss Hankins				
Monday	Tuesday	Wednesday	Thursday	Friday
Phonics	Assembly	Phonics	Lower phase singing assembly	Star of the week Assembly
Maths	Phonics	Maths	Phonics	Phonics
	Maths meeting		Maths meeting	Maths meeting
Break				
Writing	Maths	Writing	Maths	Writing
Lunch				
Science	RE	Spanish	RE	Geography
		RSE	Music Lesson	
Tennis	Computing	PE	RE	Art
			Ms McAveety's story session (all year)	

# Assessment

- Assessment of each individual child's progress is an ongoing activity throughout the day, week and term.
- When children are identified as struggling with an area of learning, an adult will support them within the lesson and/or a teacher will provide a specific intervention, to help support their learning and ensure they have the confidence to keep trying.
- Children will be assessed against NC learning objectives as well as individual targets set by the class teacher.
- Progress will be reported to parents at 3 points during the year. In the Autumn, Spring and Summer. This will be done at parents evening. Their final report will indicate their progress and attainment for the academic year.

# SATS

In the summer term the children will be completing the end of KS1 SATS tests in: Maths, SPaG and Reading.

These are unofficial assessments of the children but they are beneficial for us as a school to see how the children have grown and developed through KS1.

# Core topics

## Maths

	Week 1	Week 2	Week 3	Week 4	Week 5	Week 6	Week 7	Week 8	Week 9	Week 10	Week 11	Week 12
Autumn term	<p>Number</p> <hr/> <b>Place value</b> FREE TRIAL				<p>Number</p> <hr/> <b>Addition and subtraction</b>				<p>Geometry</p> <hr/> <b>Shape</b>			
	VIEW				VIEW				VIEW			
Spring term	<p>Measurement</p> <hr/> <b>Money</b>		<p>Number</p> <hr/> <b>Multiplication and division</b>				<p>Measurement</p> <hr/> <b>Length and height</b>		<p>Measurement</p> <hr/> <b>Mass, capacity and temperature</b>			
	VIEW		VIEW				VIEW		VIEW			
Summer term	<p>Number</p> <hr/> <b>Fractions</b>			<p>Measurement</p> <hr/> <b>Time</b>			<b>Statistics</b>		<p>Geometry</p> <hr/> <b>Position and direction</b>		Consolidation	
	VIEW			VIEW			VIEW		VIEW			

# Core topics

## Writing

In year 2, children should learn a range of English language and literature skills, such as:

- reading and spelling KS1 common exception words
- reading and spelling words with suffixes
- writing simple narratives and non-fiction texts
- reading and spelling homophones

### I and eye



The pirate wore an **eye** patch.



I like to eat **sweets**.

twinkl www.twinkl.com

### Year 1 and 2 Common Exception Words

Year 1			Year 2			
the	they	one	door	gold	plant	clothes
a	be	once	floor	hold	path	busy
do	he	ask	poor	told	bath	people
to	me	friend	because	every	hour	water
today	she	school	find	great	move	again
of	we	put	kind	break	prove	half
said	no	push	mind	steak	improve	money
says	go	pull	behind	pretty	sure	Mr
are	so	full	child	beautiful	sugar	Mrs
were	by	house	children	after	eye	parents
was	my	our	wild	fast	could	Christmas
is	here		climb	last	should	everybody
his	there		most	past	would	even
has	where		only	father	who	
I	love		both	class	whole	
you	come		old	grass	any	
your	some		cold	pass	many	

twinkl www.twinkl.com

### Suffixes -ment, -ful, -less, -ness and -ly

A suffix is an 'ending' used at the end of a root word to turn it into another word. Sometimes, the root word has to be changed before a suffix is added.  
Adding -ment can change a verb into a noun.  
Adding -ful or -less can change verbs or nouns into adjectives.  
Adding -ness can change an adjective into a noun.  
Adding -ly can change an adjective into an adverb.

-ment		-ful/-less		
verb	noun	verb or noun	adjective -ful	adjective -less
refresh	refreshment	use	useful	useless
enjoy	enjoyment	care	careful	careless
pay	payment	thought	thoughtful	thoughtless
disappoint	disappointment	mind	mindful	mindless
employ	employment	doubt	doubtful	doubtless
manage	management	hope	hopeful	hopeless
govern	government	fear	fearful	fearless
punish	punishment	help	helpful	helpless
treat	treatment	colour	colourful	colourless
agree	agreement			

-ness		-ly		
adjective	noun	adjective	adverb	
happy	happiness	graceful	gracefully	
bright	brightness	proud	proudly	
gloomy	gloominess	bad	badly	
ill	illness	quick	quickly	
sad	sadness	lazy	lazily	
black	blackness	angry	angrily	
ugly	ugliness	light	lightly	
polite	politeness	gentle	gently	
silly	silliness	hopeless	hopelessly	
late	lateness	narrow	narrowly	

twinkl www.twinkl.com



# Foundation topics

## History topics:

- Charles II: Plague and fire
- The Victorians
- The first Olympics


## Geography

- Spatial senses
- The British Isles
- Mediterranean Europe

## Science

- The Human Body
- Materials and matter
- Astrology
- Plants
- Living things and their habitats

**Knowledge Organiser- Science Year 2- Human Body**

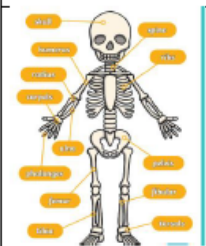


Key Vocabulary	Definition
Skeleton	The bones that make up the human body
Joint	The place where two bones come together
Muscles	Muscles move the different parts of our body by contracting and relaxing
Digest	The process where the food we eat gets broken down
Red blood cell	Vehicles that carry oxygen around the body
Arteries	A tube that blood cells travel through around the body from the heart
Veins	A tube that carries blood cells back to the heart
Germes	Tiny living things that cause illness
Edward Jenner	A scientist who invented a vaccination against smallpox
Louis Pasteur	A scientist who discovered that heating liquids killed the germs within

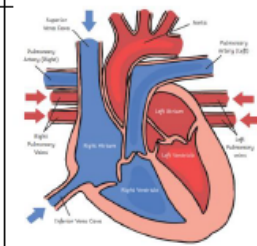
In order to survive ALL animals need:  
**Water and Food and Air**

Ways to keep healthy	Reason
Exercise	Exercise keeps our muscles and bones strong. It also makes us feel happy.
Eating healthy foods	Our bodies take nutrients from our food that help us to grow and stay well.
Resting	Rest helps our bodies to recover and rebuild.
Keeping clean	Good hygiene prevents germs from spreading.
Medicines	If we are ill, sometimes medicines can make us better.

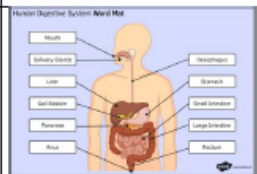
**Skeletal system**



**Circulatory system**



**Digestive system**

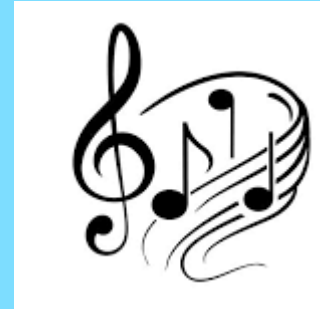


**Muscular system**

- Triceps – straighten the arm
- Biceps – bend arm
- Thigh muscles – help to move your leg

# Extra curricular activities

- Music
- Drama
- Gymnastics
- Dance





Each week the children will receive 4 homework tasks.

- A list of **spellings** to learn. We will do a spelling test every Friday mornings. The children all have an account to spelling frame so I would recommend they log in to practise their spellings each week.
- A **times table** activity to help them learn their times tables off by heart
- A **Maths** worksheet
- An **English** worksheet
  
- Homework is to be returned on Thursdays and set again on Fridays.

# Reading



In addition to weekly homework, your child is expected to read every evening. Reading books need to be signed by yourselves and returned to school every Friday morning. Your child will come home with a new book every Friday afternoon.

If they finish their book mid week, please encourage your child to answer lots of comprehension questions and read additional books from home.

## Phonics and phonics resources:

The children are given a zip folder with their reading record, class library book and a phonics book to support them with their reading and their ability to identify and use sounds to encourage them.

These need to be **returned every Thursday** alongside the homework that is set each week to avoid losing the resources.



## Behaviour Policy Aims:

- Create a positive culture that promotes excellent behaviour, ensuring that all pupils have the opportunity to learn in a calm, safe and supportive environment.
- Establish a whole-school approach to maintaining high standards of behaviour that reflect the values of the school.



# How you can support at home

- Routine - It is best if you can, to set up a designated space for homework, wherever that may be. As long as there is somewhere that is calm and uncluttered that your child knows is their spot for homework.
- Healthy habits – habits like getting plenty of sleep and exercise and eating well. These factors can contribute positively to children's learning abilities and cognitive development.
- Encourage independence - As kids grow older, they naturally start wanting to take more responsibility for their learning. Promote this independence by allowing them to make choices, solve problems, and take on new challenges.
- Reading - Statistics show that one in five children in England cannot read well by the age of 11. Children are less able to excel in their learning if they do not develop sufficient reading skills by the middle of primary school. Please ensure your child reads every single night and is asked a range of comprehension questions.

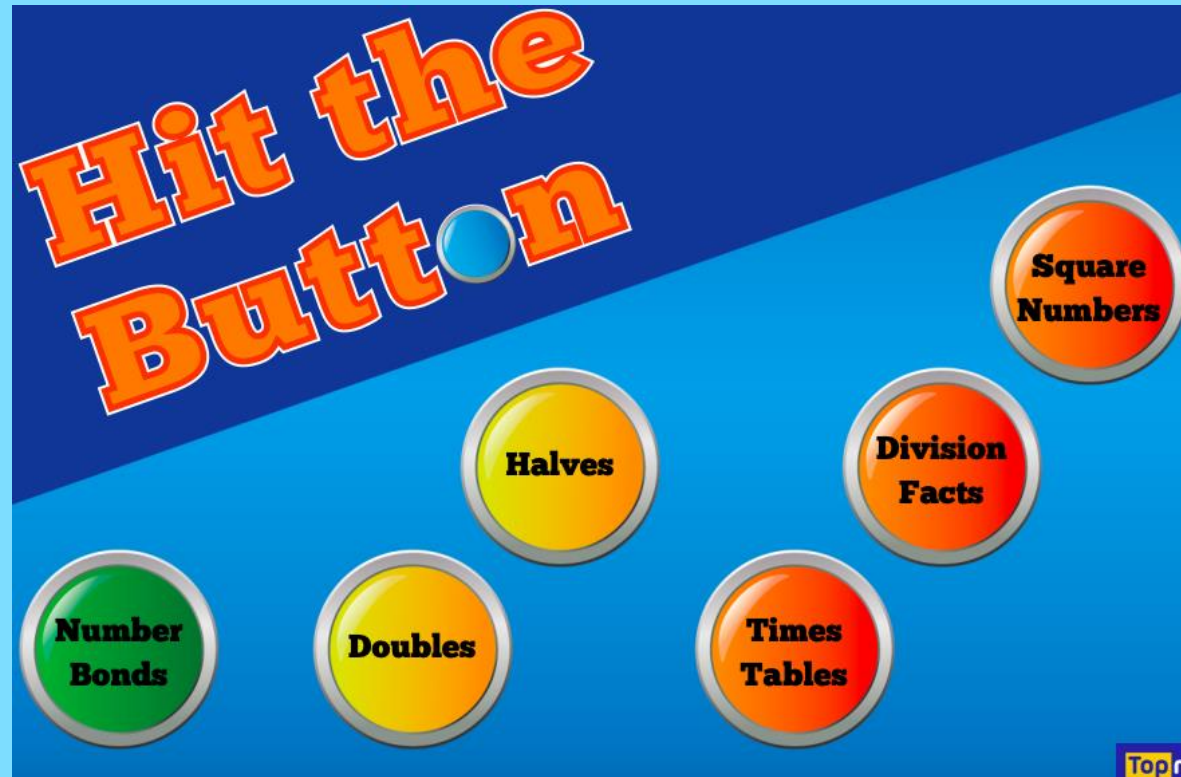
# Useful websites

Addition, subtraction, timetables and division:

- Hit the button
- Timetable rockstars

Spellings

- Spelling frame
- Spooky spellings





If you have any questions please do not  
hesitate to ask!  
I hope your child will have a positive and fun  
year in Year 2!